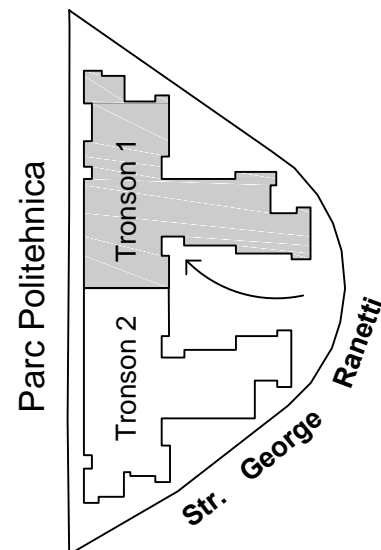
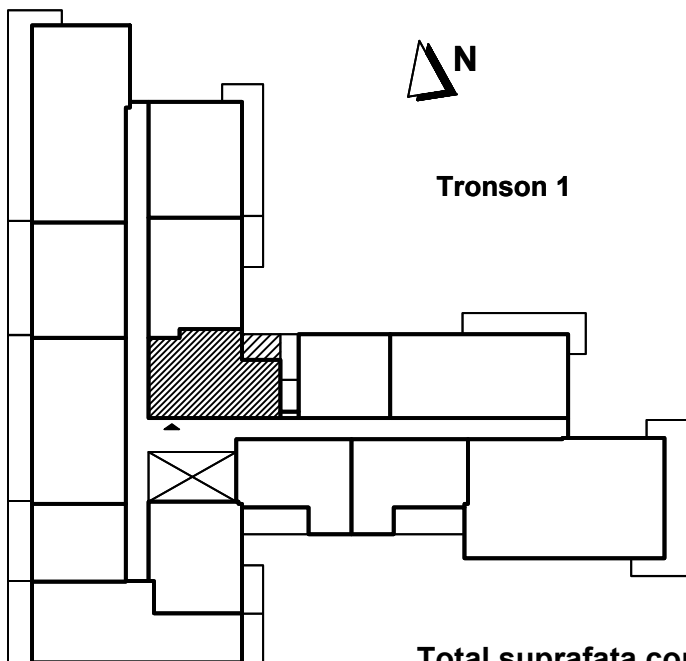
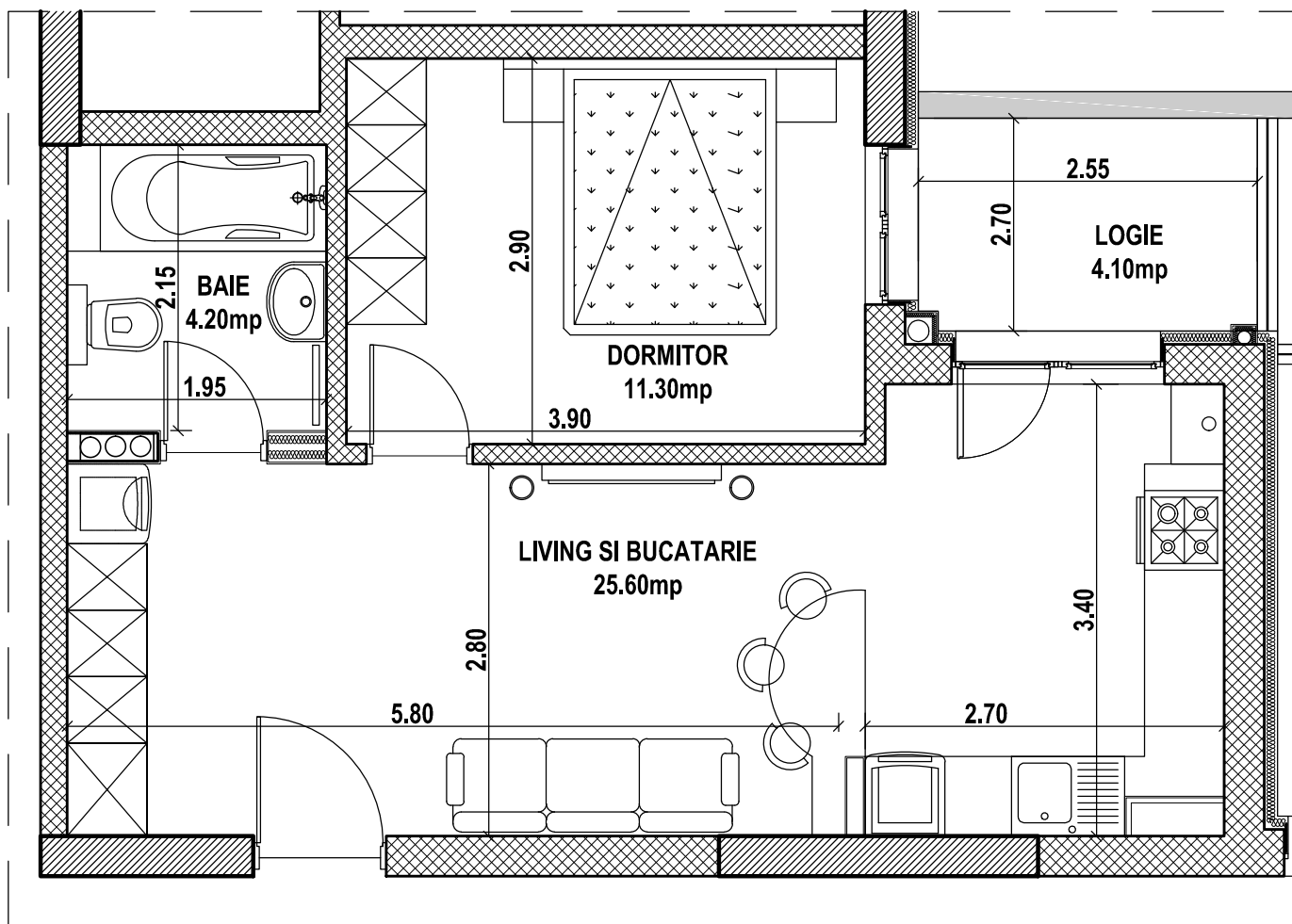


# Apartment 2 camere - 1109, etaj 1, tronson 1 Str. George Ranetti, Nr. 2-8, Sector 6



Total suprafata construita apartament = 55.80 mp, din care:  
 - suprafata construita logie = 4.70 mp  
 Total suprafata utila apartament = 45.20 mp



▲  
AP. 1109